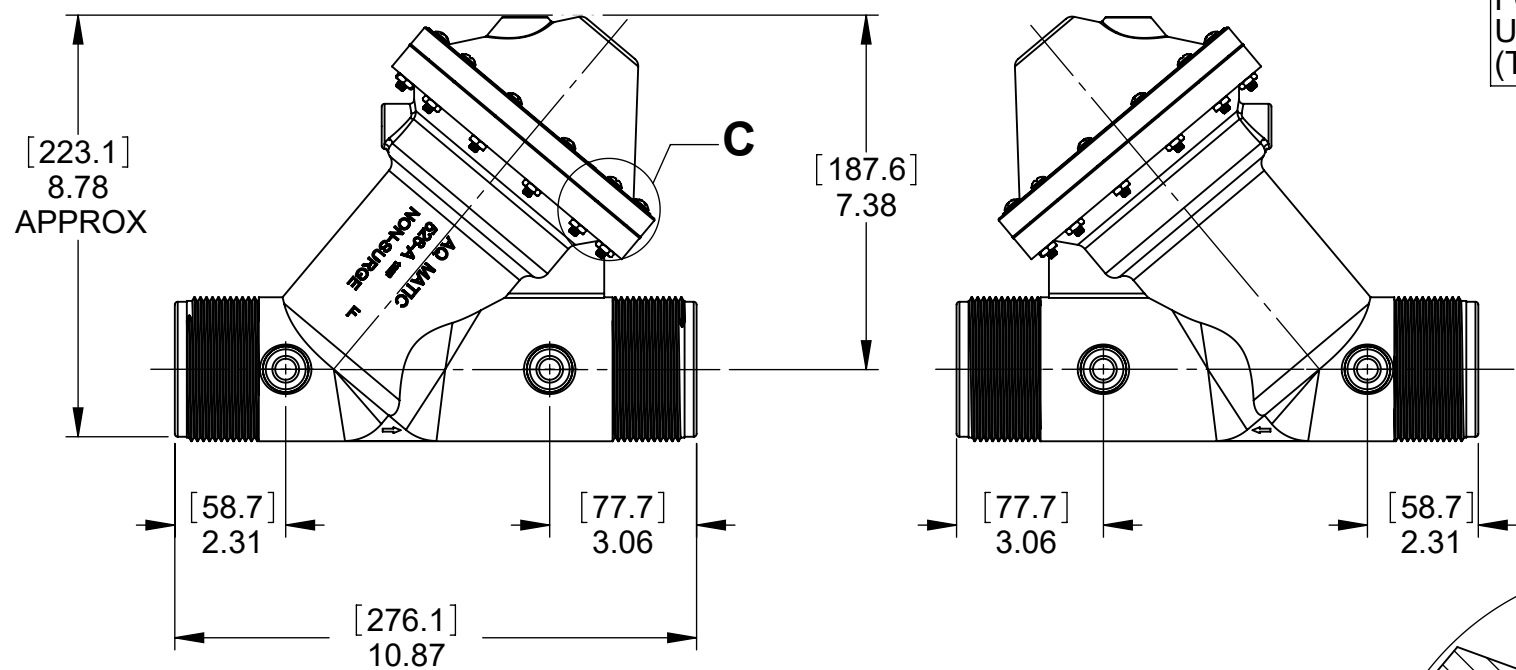
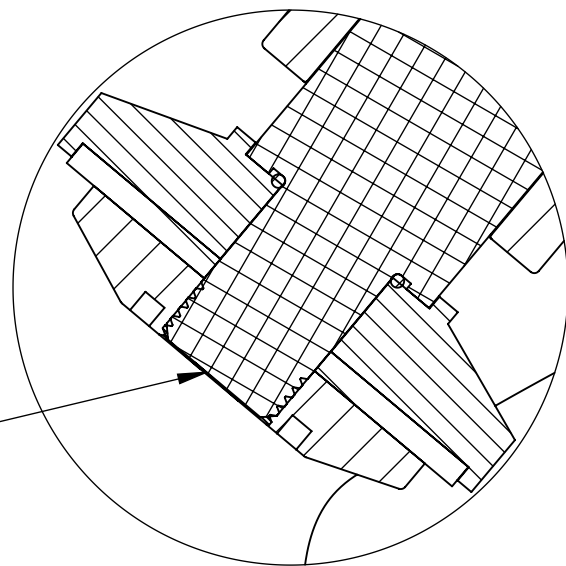


D



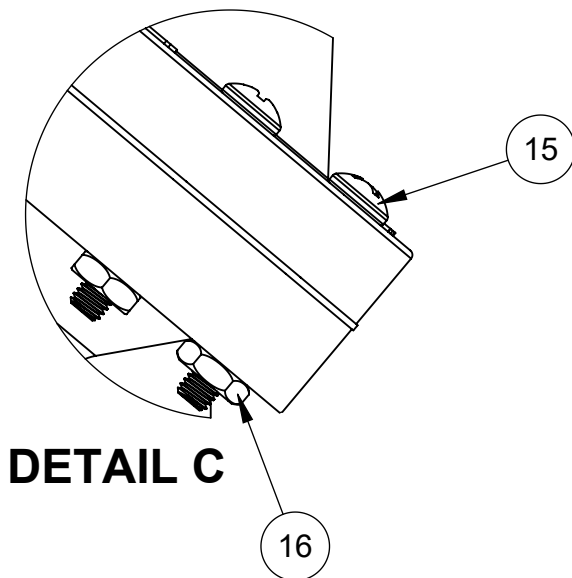
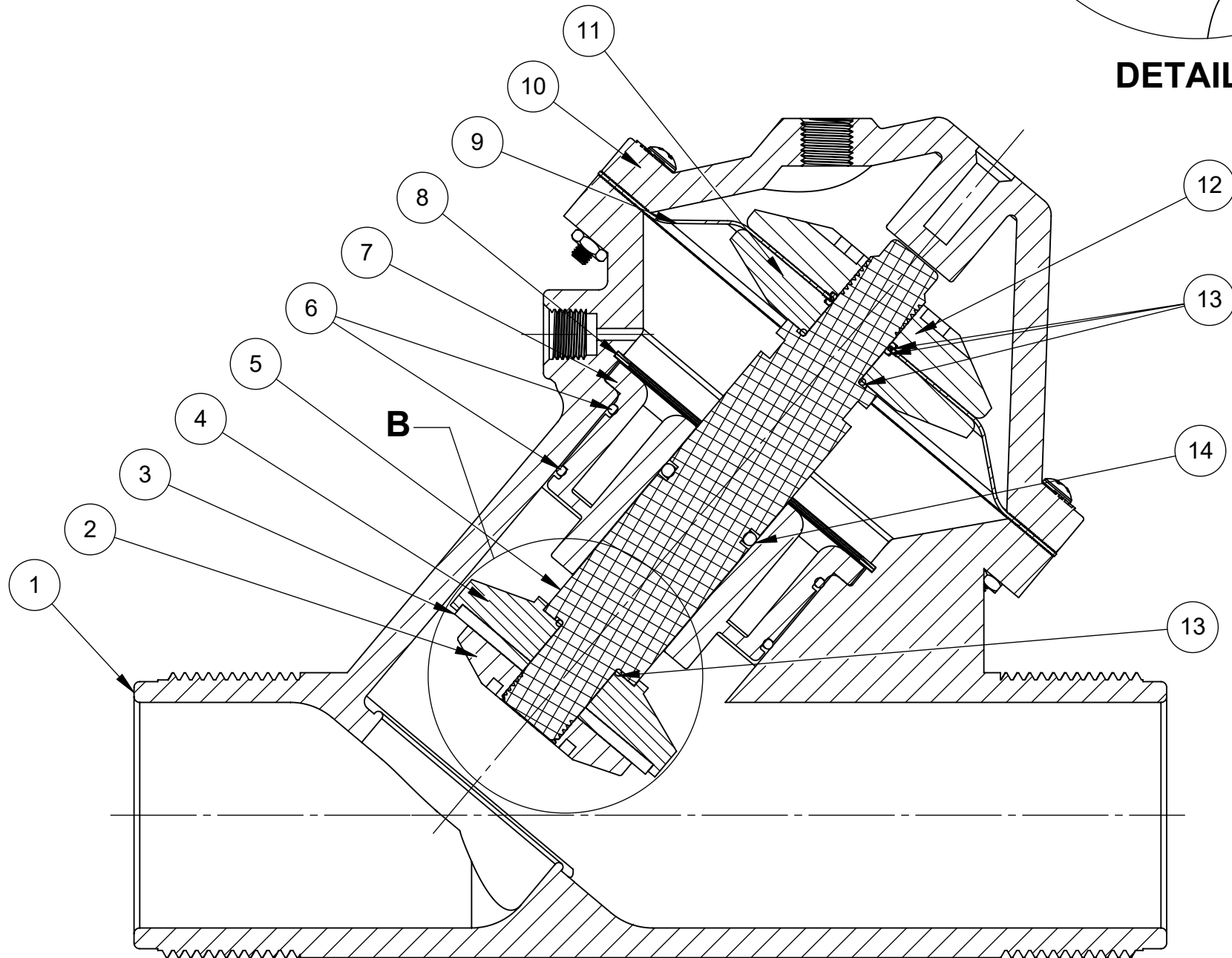
ASSEMBLY TOOLS	
DESCRIPTION	PART NO.
FOR INSTALLATION & REMOVAL OF SHAFT (ITEM #5) (TOOL NOT SHOWN)	1077837
FOR INSTALLATION & REMOVAL OF UPPER DIAPHRAGM PLATE (ITEM #12) (TOOL NOT SHOWN)	1075224 (526-Z)

TORQUE TABLE		
ITEM #	DESCRIPTION	TORQUED TO (+/- 10%)
2	PLATE, DISC	22.5 IN-LB
12	UPR. DIA. PLATE	40 IN-LB
15 & 16	CA P SCREW & NUT	32.5 IN-LB



DETAIL B

DISC NUT/SHAFT TO BE FLUSH AFTER COMPONENTS ARE TIGHTENED TO 20-25 IN-LB [2.3-2.8 Nm]



DETAIL C

B

A

1070180 (K526-X200-14000)
NORMALLY OPEN (STANDARD)

- SEE DRAWING 1081309 FOR THREADED SOCKET WELD ENDS AND THREADED FLANGED ADAPTORS
- SEE SHEET 2 FOR CONFIGURATION OPTIONS

2

REVISIONS				
ECN	REV.	DESCRIPTION	DATE	APP'D
1001	O	AQ TEMPLATE UPDATE & VERIFIED PART NUMBERS	01/17/17	MGS
1507	P	REMOVE BR FROM DRW NUMBER, CORRECT MINOR ERRORS, ADD TORQUE TABLE	05/14/19	KJB
1964	Q	CATALOG SHEET UPDATE WITH MODEL NUMBERS	11/1/21	TRK
2287	R	CATALOG SHEET UPDATE, ELIMINATE O-RING 1071713	3/11/24	TRK
2505	S	CATALOG SHEET UPDATE, O-RING 1071817 CORRECTION	1/21/25	TRK

NORMALLY OPEN MODEL				
ITEM NO.	DESCRIPTION		PART NUMBER	QTY.
1	BODY, 526	NORYL	1075162 (526-AK)	1
2	DISC PLATE, 526	NORYL	1075176 (526-EK)	1
3	DISC	EPDM	1075181 (526-J)	1
		BUTYL	1075182 (526-JJ)	
		FKM	1075183 (526-JV)	
4	DISC HOLDER	PVC	1075197 (526-RP)	1
5	SHAFT	PVC	43119	1
6	O-RING, 2-148	EPDM	1071738 (ORE-148)	2
		BUTYL	1071773 (ORJ-148)	
		FKM	1071810 (ORV-148)	
7	SHAFT GUIDE	NORYL	1075178	1
8	RETAINING RING	SS	1075180	1
9	DIAPHRAGM	BUNA	1075177 (526-FB)	1
10	CAP, 526	NORYL	1075167 (526-BBOK)	1
11	LWR. DIAP. PLATE	NORYL	43051	1
12	UPR. DIAP. PLATE	NORYL	43050	1
13	O-RING, 2-018	EPDM	1071673 (ORE-018)	4
		BUTYL	1071762 (ORJ-018)	
		FKM	1071790 (ORV-018)	
14	O-RING, 2-214	EPDM	1010140 (ORE-214)	1
		BUTYL	1071778 (ORJ-214)	
		FKM	1071817 (ORV-214)	
15	SCREW, 10-32 X 1 3/8", PHILLIPS	SS	1072382 (SCS-0098)	12
16	HEX NUT, 10-32	SS	1071648 (NUS-0006)	12

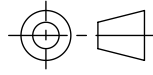
REPAIR PARTS KITS		
DIAPHRAGM & SEALS KIT CONSISTS OF ITEM NO'S 3,6(2),9,13(4),14	1070275 (526-RA) EPDM KIT INCLUDES DIAPHRAGM 1075177 (526-FB)	1070283 (526-RAJ) BUTYL KIT INCLUDES DIAPHRAGM 1075177 (526-FB)
	1070291 (526-RAV) FKM KIT INCLUDES DIAPHRAGM 1075177 (526-FB)	
INTERNAL PARTS KIT (NORMALLY OPEN) CONSISTS OF ITEM NO'S 2,4,5,7,11,12	1070299 (K526-RF)	

THIS DOCUMENT IS SOLELY THE PROPERTY OF AQ-MATIC REPRODUCTION, USE DISCLOSURE, OR TRANSMISSION OF THIS DOCUMENT OR DETAILS CONTAINED HEREIN, IN PART OR IN WHOLE, IS PROHIBITED WITHOUT THE WRITTEN CONSENT OF AQ-MATIC ENGINEERING. THIS DOCUMENT AND ANY COPIES SHALL BE RETURNED TO AQ-MATIC UPON WRITTEN REQUEST.

DO NOT SCALE DRAWING. DIMS. ARE IN INCHES [mm]
INTERPRET DIMS AND TOLERANCES PER ASME Y14.5M -1994
UNLESS OTHERWISE SPECIFIED:
CORNER FILLETS R.005-.020 [0.127-.508]
TOLERANCES:
ANGLES: ± 1°
1 PLACE .X: ± .100 [2.54]
2 PLACE .XX: ± .010 [0.25]
3 PLACE .XXX: ± .005 [0.13]

THE COMPONENT, PART, OR ASSEMBLY DESCRIBED IN THIS DOCUMENT MUST COMPLY WITH THE EU (EUROPEAN UNION) DIRECTIVE: RoHS DIRECTIVE 2011/65/EC.

THIRD ANGLE PROJECTION



APPROVALS

DATE

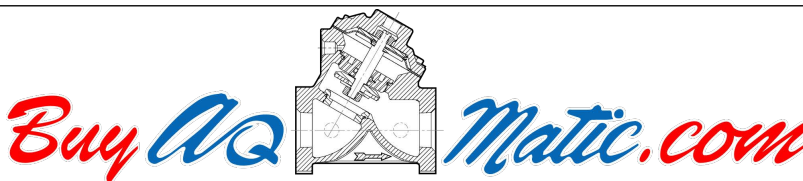
DRAWN

TRK

3/25/21

CHECKED BY

APPROVED



CATALOG SHEET, 526
DIAPHRAGM VALVE

SIZE

C

DWG NO.

1077656

REV.

S

SCALE

1:1

SOLIDWORKS FORMAT

SHEET 1 OF 2

4

3

2

1

D

C

B

A

REVISIONS				
ECN	REV.	DESCRIPTION	DATE	APP'D
		SEE SHEET 1 FOR LIST OF CHANGES		

LIMIT STOP MODEL				
ITEM NO.	DESCRIPTION		PART NUMBER	QTY.
17	MALE PIPE PLUG, 1/4"	HDPE	1071913 (PLP-0010)	1
18	O-RING, 2-012	BUNA	1071668	1
19	LIMIT STOP SCREW	SS	1075223	1
20	LIMIT STOP NUT	SS	1075222	1
21	O-RING,-016,BUNA		1071671	1
22	CAP, 526	NORYL	1075167 (526-BBOK)	1

NORMALLY CLOSED MODEL				
ITEM NO.	DESCRIPTION		PART NUMBER	QTY.
17	MALE PIPE PLUG, 1/4"	HDPE	1071913 (PLP-0010)	1
23	SHAFT, VALVE 526,NC	PVC	43143	1

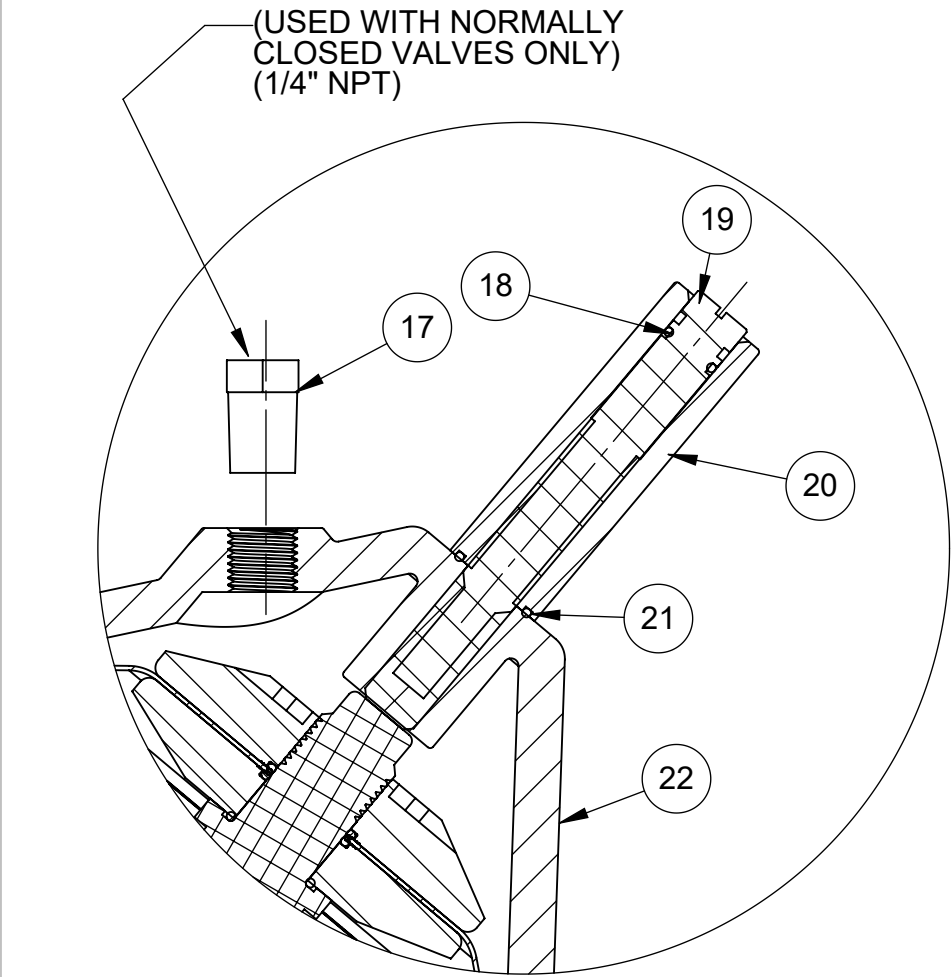
SPRING ASSIST CLOSED				
ITEM NO.	DESCRIPTION		PART NUMBER	QTY.
24	SPRING, COMPRESSION	SS	1075202 (K526-T)	1

SPRING ASSIST OPEN MODEL				
ITEM NO.	DESCRIPTION		PART NUMBER	QTY.
25	SPRING, COMPRESSION		1267399 (526-SS)	1
26	DIAPHRAGM PLATE, LOWER, 526, SAO		1075175	1

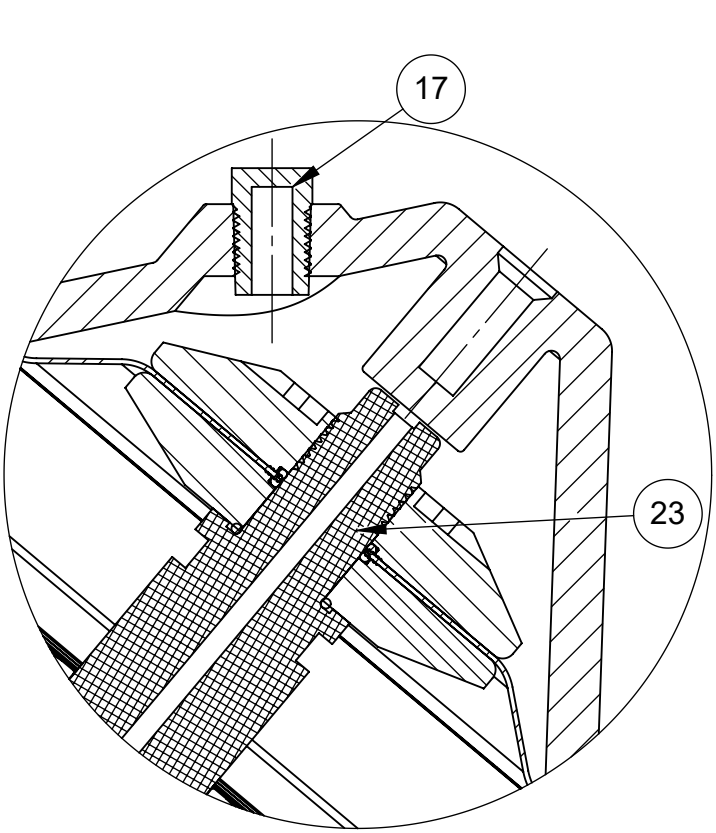
POSITION INDICATOR MODEL				
ITEM NO.	DESCRIPTION		PART NUMBER	QTY.
27	GUIDE HOUSING, 521		1075038	1
28	O-RING, 2-106		1071687	1
29	ROD, PI, 526		1075184 (526-KD)	1
30	PLUG, GUIDE HOUSING, 520		1074971	1
31	CAP, 526		1075167 (526-BBOK)	1
32	SHAFT, VALVE 526, PI		43142	1
33	O-RING,-016,BUNA		1071671	2

NOTES:

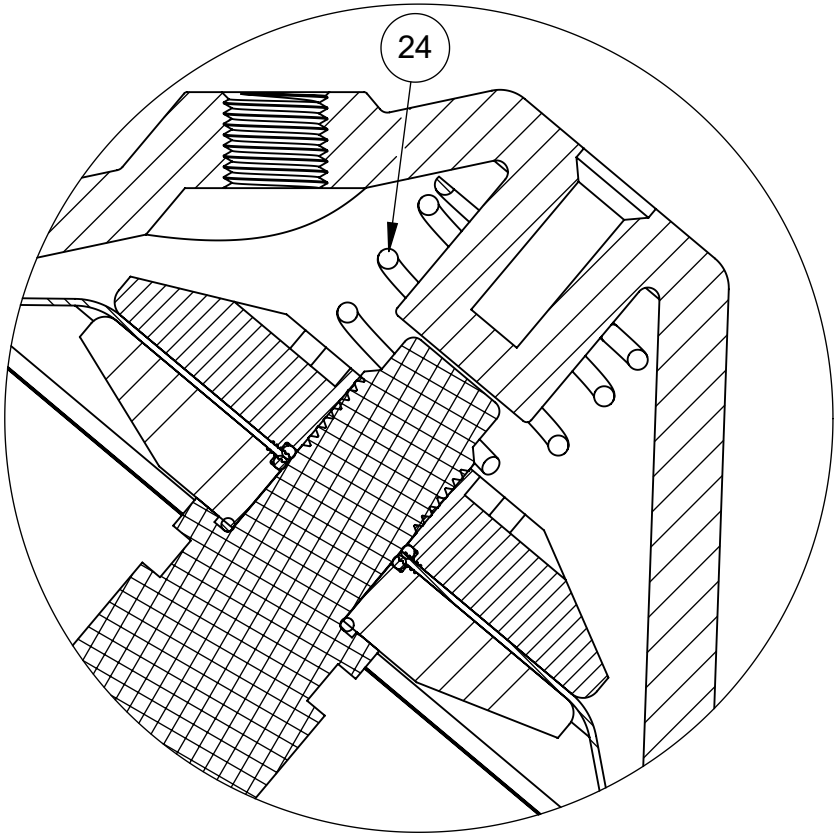
1. POSITION INDICATOR MODEL CANNOT BE COMBINED WITH NORMALLY CLOSED OR LIMIT STOP OPTIONS.
2. POSITION INDICATOR MODEL FURNISHED WITH SPRING ASSIST OPEN OPTION.



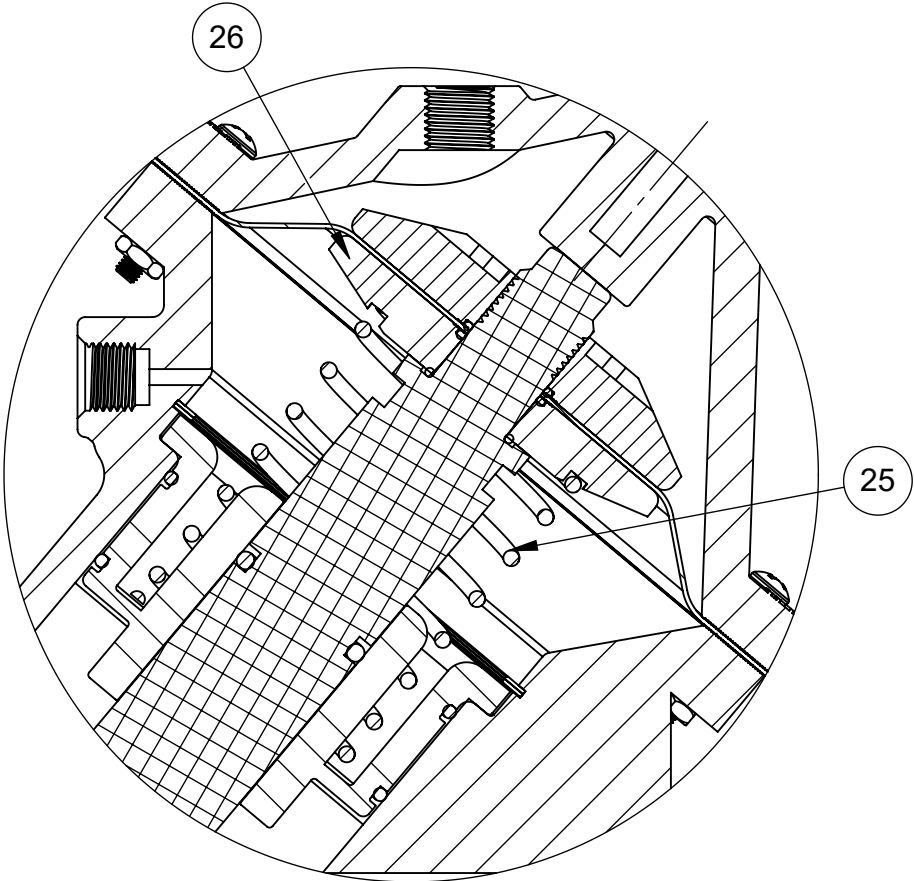
1070181 (K526-X210-14000)
LIMIT STOP



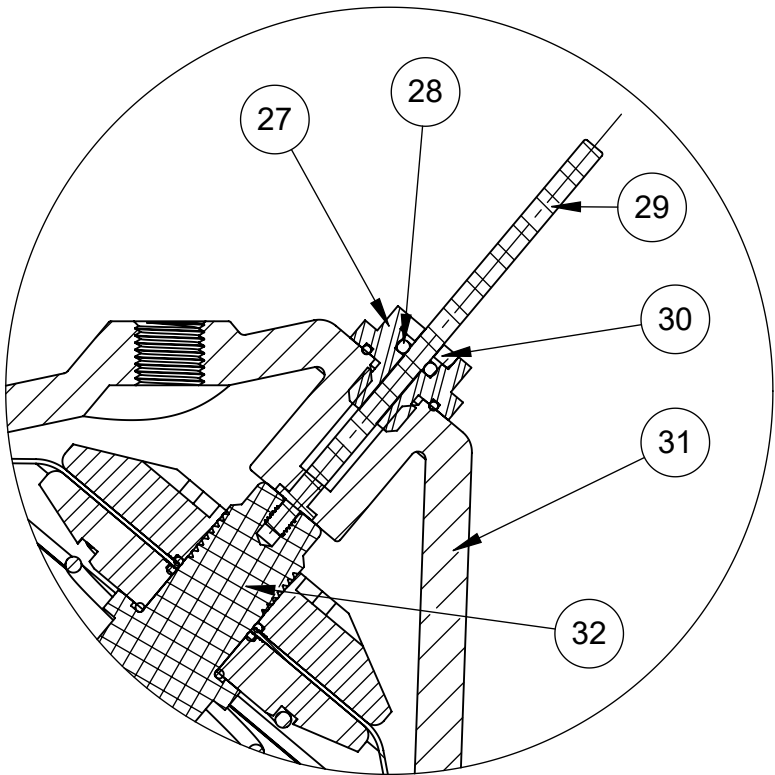
1071256 (K526-X230-14000)
NORMALLY CLOSED



1071246 (K526-X202-14000)
SPRING ASSIST CLOSED



1071242 (K526-X201-14000)
SPRING ASSIST OPEN



1071255 (K526-X221-14000)
POSITION INDICATOR

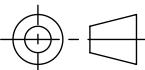
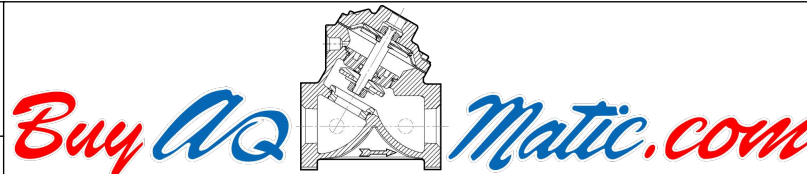
- SEE DRAWING 1081309 FOR THREADED SOCKET WELD ENDS AND THREADED FLANGED ADAPTORS
- SEE SHEET 1 FOR STANDARD NORMALLY OPEN MODEL

CONVERSION KITS	
DESCRIPTION	PART NO.
CONVERSION KIT (LIMIT STOP) CONSISTS OF ITEM NO'S 18 THRU 22	1071225 (526-LSC)
CONVERSION KIT (SPRING ASSIST CLOSED) CONSISTS OF ITEM NO 24	1075200 (526-SC)
CONVERSION KIT (SPRING ASSIST OPEN) CONSISTS OF ITEM NO'S 25 & 26	1071227 (526-SO)
CONVERSION KIT (POSITION INDICATOR) CONSISTS OF ITEM NO'S 27 THRU 33	1079674 (K526-PIC)

REPAIR PARTS KITS	
DESCRIPTION	PART NO.
INT. PARTS KIT (LIMIT STOP) CONSISTS OF NO'S 18 THRU 21	1075191 (526-LS)
INT. PARTS KIT (NORM. CLOSED) CONSISTS OF ITEM NO'S 3,4,7,11,12, 23	1071226 (K526-RG)
INT. PARTS KIT (SPRING ASSIST CLOSED) CONSISTS OF ITEM NO. 24	1075200 (526-SC)
INT. PARTS KIT (SPRING ASSIST OPEN) CONSISTS OF ITEM NO'S 25 & 26	1071227 (526-SO)
INT. PARTS KIT (POSITION INDICATOR) CONSISTS OF ITEM NO'S 27 THRU 31, 33	1081804 (526-PI)

THIS DOCUMENT IS SOLELY THE PROPERTY OF AQ-MATIC REPRODUCTION, USE DISCLOSURE, OR TRANSMISSION OF THIS DOCUMENT OR DETAILS CONTAINED HEREIN, IN PART OR IN WHOLE, IS PROHIBITED WITHOUT THE WRITTEN CONSENT OF AQ-MATIC ENGINEERING. THIS DOCUMENT AND ANY COPIES SHALL BE RETURNED TO AQ-MATIC UPON WRITTEN REQUEST.

DO NOT SCALE DRAWING. DIMS. ARE IN INCHES [mm]
INTERPRET DIMS AND TOLERANCES PER ASME Y14.5M -1994 UNLESS OTHERWISE SPECIFIED:
CORNER FILLETS R.005-.020 [0.127-.508]
TOLERANCES:
ANGLES: ± 1°
1 PLACE .X: ± .100 [2.54]
2 PLACE .XX: ± .010 [0.25]
3 PLACE .XXX: ± .005 [0.13]

THE COMPONENT, PART, OR ASSEMBLY DESCRIBED IN THIS DOCUMENT MUST COMPLY WITH THE EU (EUROPEAN UNION) DIRECTIVE: RoHS DIRECTIVE 2011/65/EC.				
THIRD ANGLE PROJECTION				
APPROVALS		DATE		
DRAWN TRK		3/25/21		
CHECKED BY				
APPROVED				
				
CATALOG SHEET, SERIES 526 DIAPHRAGM VALVE				
SIZE C		DWG NO. 1077656		REV. S
SCALE 1:1		SOLIDWORKS FORMAT		SHEET 2 OF 2